

Hong Kong General Chamber of Commerce

# TURNING THE TIDE

What will the Future of Freight and Logistics  
Look Like in a Post-Covid Environment

- 18 January 2021 -

Angelina Lei  
Customer Service Director  
Hongkong International Terminals Limited





# TURNING THE TIDE

## What will the Future of Freight and Logistics Look Like in a Post-Covid Environment

**Angelina Lei**  
Customer Service Director  
Hongkong International Terminals Limited  
a member of Hong Kong Seaport Alliance

# Hong Kong Seaport Alliance (HKSPA)

*increases resilience of operations to minimise the risks from pandemics*

15M

**TEU throughput  
in 2020**

23

**berths** (8 mega vessels  
simultaneously)

12

**barge berths**

262

**hectares of land**

- Maximises combined capabilities in a “terminal - neutral” manner
- Better serves market needs
- Enhances operational and cost efficiencies
- Streamlines operation
- Innovates service offerings and delivery

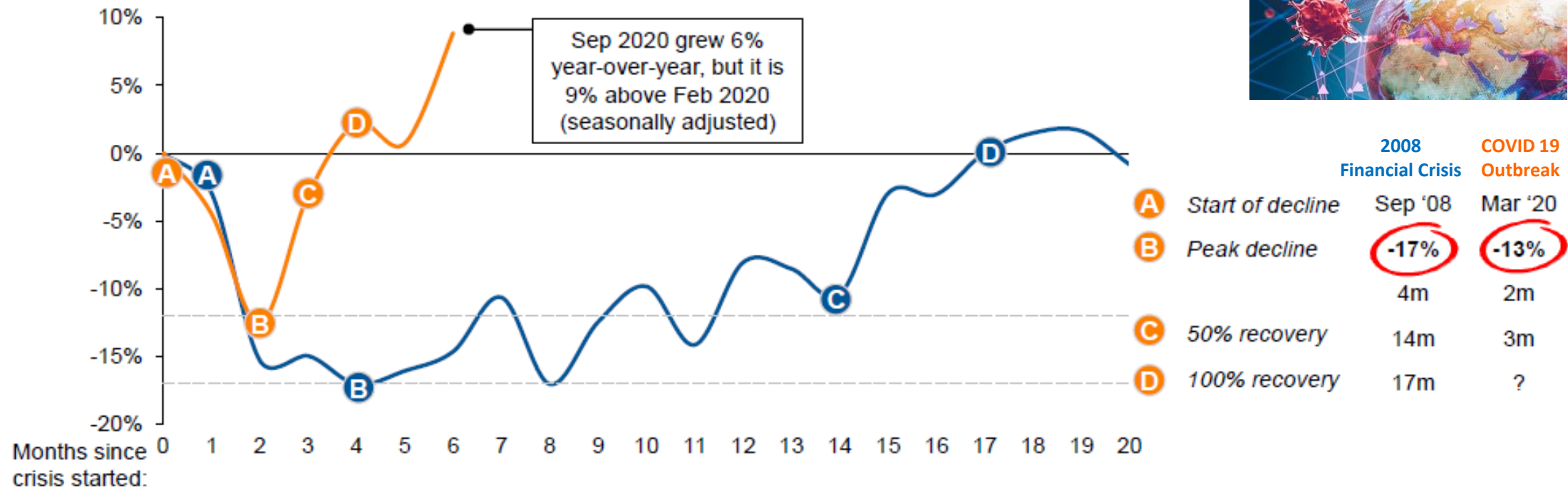




# 2020: A year of remarkable turnaround

## Global container trade development, 2008 financial crisis vs COVID-19 outbreak

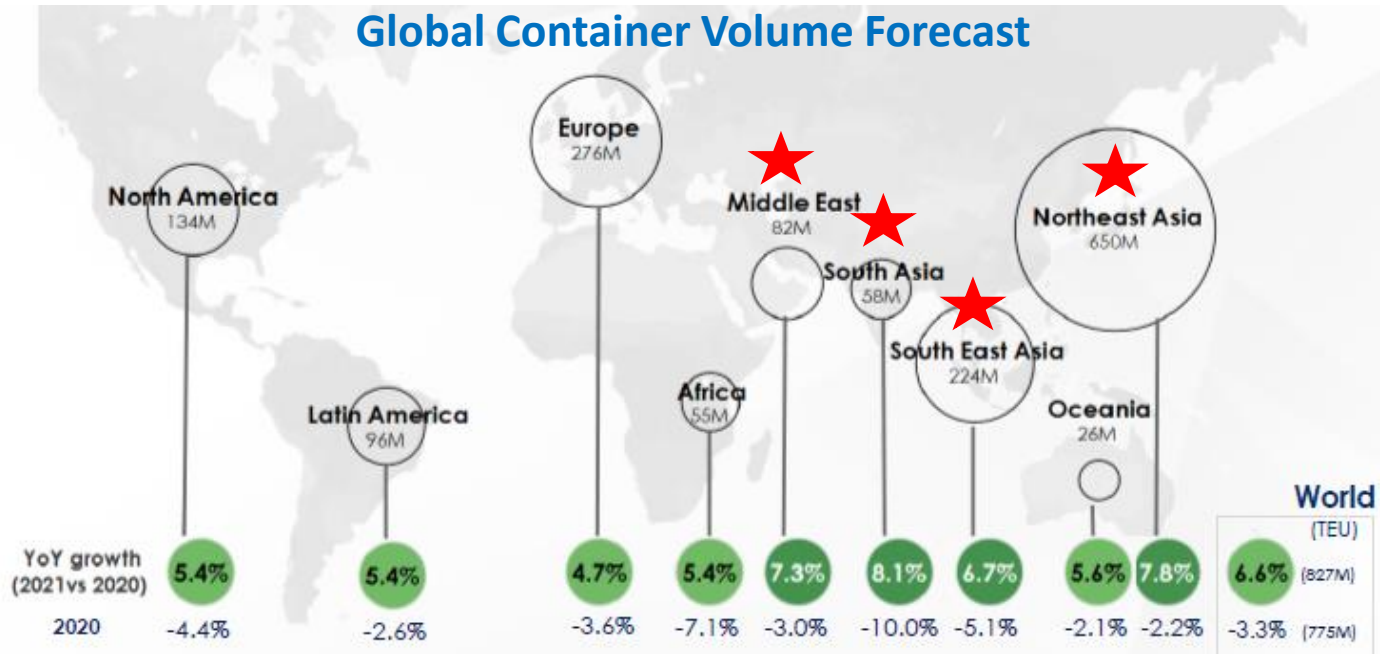
Monthly change (vs. Sep 08 for 2008 Financial Crisis and vs Feb 20 for COVID-19 outbreak)



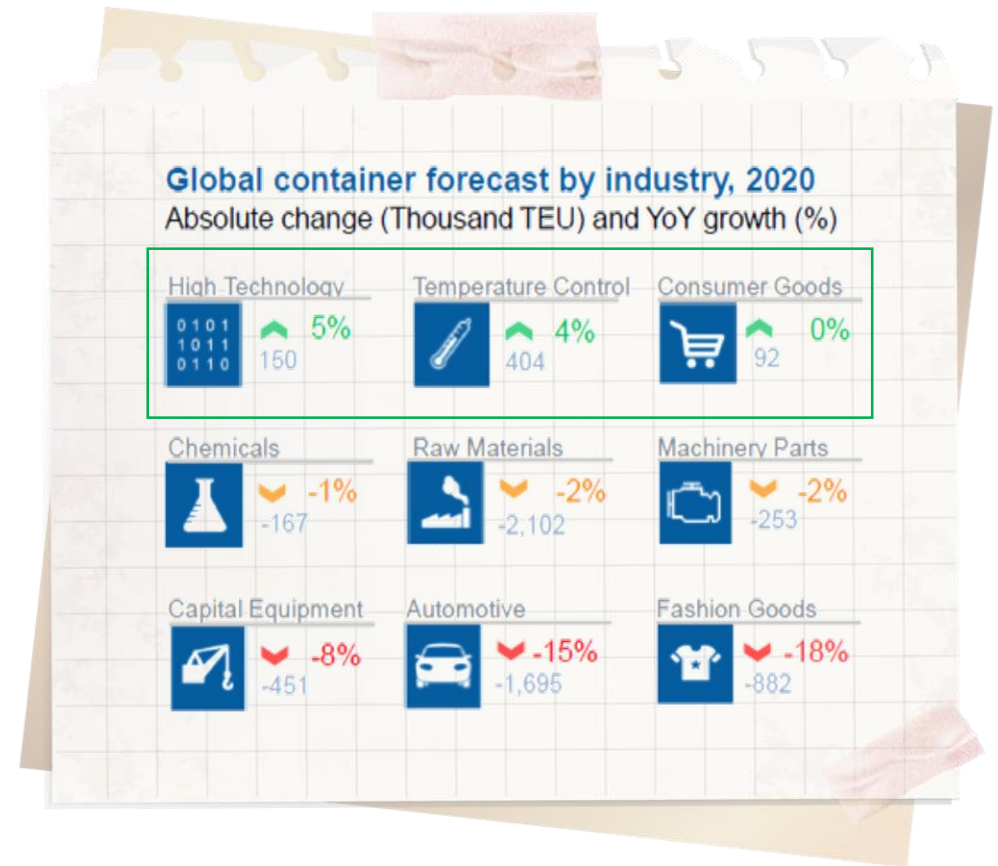
Source: Seabury

## 2020 Global Container Trade Growth: -3%

# Pandemic creates shifts in markets



**Asia Pacific** leads the recovery,  
**China** and **emerging economies** will drive container trade growth



**Perishables** and **high tech** will outperform  
all other industries in the coming years

Source:  
Drewry | Seabury Container Trade Forecast Release Notes

# Laying the foundation of a transformed industry

*According to Global Maritime Forum's Survey, the likely implications of the pandemic are:*

- **93%** → global economic crisis
- **73%** → geopolitical tension
- **72%** → change trading patterns
- **48%** → ↑ societal demand for **sustainability**

## Collaborative supply chain relationships

Greater  
connectivity

Shorten  
supply chain

Strengthen  
digitalisation

Enhance supply  
chain resilience

Less dependence on  
just-in-time models

Sustainability &  
risk management

[Source: The Pandemic is a Top Maritime Industry Issue – But It's Not the Only One – BRUNN – News and Insights on Global Risk](#)





# HKSPA: Riding the waves of change



**SEAMLESS  
CONNECTIVITY**



**ENHANCE SUPPLY  
CHAIN RESILIENCE**



**BEST IN CLASS  
CAPABILITIES**



**DRIVE FOR  
DIGITALISATION**



**INNOVATE FOR  
SUSTAINABILITY**

# HKSPA keeps your international, regional and local markets open

*Free Port Status and comprehensive service network allows easy market diversification*



Unique **Free Port** status  
**No barriers** on trade  
**International Credibility**  
**227** weekly liner calls



# HKSPA's multi-modal connectivity

*caters to your delivery needs and capitalises on opportunities in China*



**Barges** | The largest barge cluster in South China handling **> 6M TEU** barge transshipment volume



**100** daily barge calls covering more than **100** Pearl River Delta terminals



**Trucks** | Reach China's major trading & consumption markets in hours



**Shenzhen:**  
1 hour



**Shanghai:**  
24 hours



**Sea-rail** | Connect to Qinzhou by barge for rail connection to penetrate into inland China



# HKSPA: a catch up port that you can count on

*shortens your supply chain and eliminates wastage*



## Shipping lines' schedule reliability

(2020 FY / Dec)

- Schedule accuracy: **28% / 10%**
- Deviation from schedule: **35 hours / 87 hours**



## HKSPA offerings for vessels

- Berth on Arrival: **80%**
- Waiting time: **2** hours



# HKSPA's agile operations

*creates value to customers quickly and keep development work aligned with business needs*

- ✓ provides **reefer capacity** in times of other ports' closure and reefer plug shortage
- ✓ caters **unscheduled calls**
- ✓ facilitates efficient cargo **rollover**
- ✓ serves as **empty repositioning hub**
- ✓ renowned as a **super connector**  
(Max transshipment connectivity :  
1 vessel connecting to **104 vessels & 146 barges** )



# HKSPA captures growth in the cold chain market

*Ready for the massive demand of vaccine distribution*

- **900K refrigerated TEU** per year
- **>7,800 reefer points**, the highest in South China
- **15 mins** expedited cargo release

- **Expertise** in a cool range of services

Sensitive Reefer, Controlled Atmosphere Reefer, Cold Treatment, General Reefer

[https://pathpoint.path.org/SiteDirectory/OPTIMIZE/Optimize Project Documents/SO3\\_Communication Materials/Activity 2-pagers/Temperature\\_monitoring\\_04nov11.docx](https://pathpoint.path.org/SiteDirectory/OPTIMIZE/Optimize%20Project%20Documents/SO3_Communication%20Materials/Activity%202-pagers/Temperature_monitoring_04nov11.docx) (who.int)  
[Massive demand seen for marine reefer containers to ship Covid-19 vaccine | Hellenic Shipping News Worldwide](#)



**60,000 refrigerated containers** would be required for distribution of the vaccine over a period of two to three years

**Ocean freight** as a potentially secure and economic alternative method to transport vaccines

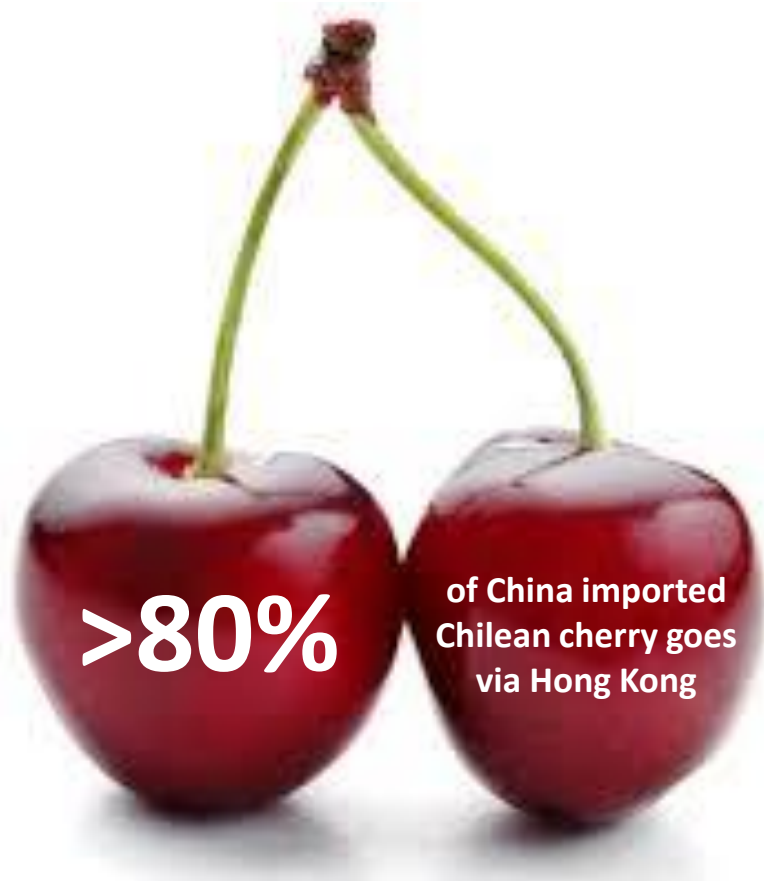
- WHO & PATH -





# HKSPA: Champion for Chilean Cherry Handling

*Renowned fruit express provides unbeatable and the fastest terminal delivery process to capitalise the highest selling value*



HKSPA is the first port of call from Chile



From container discharge to market

# HKSPA's best in class capabilities in handling dangerous goods

*ensures the supply chain of essentials remain uninterrupted*

- **Least restriction** and dedicated expertise in handling dangerous goods
- **Proactive alerts** on DG compatibility and self proprietary system for monitoring



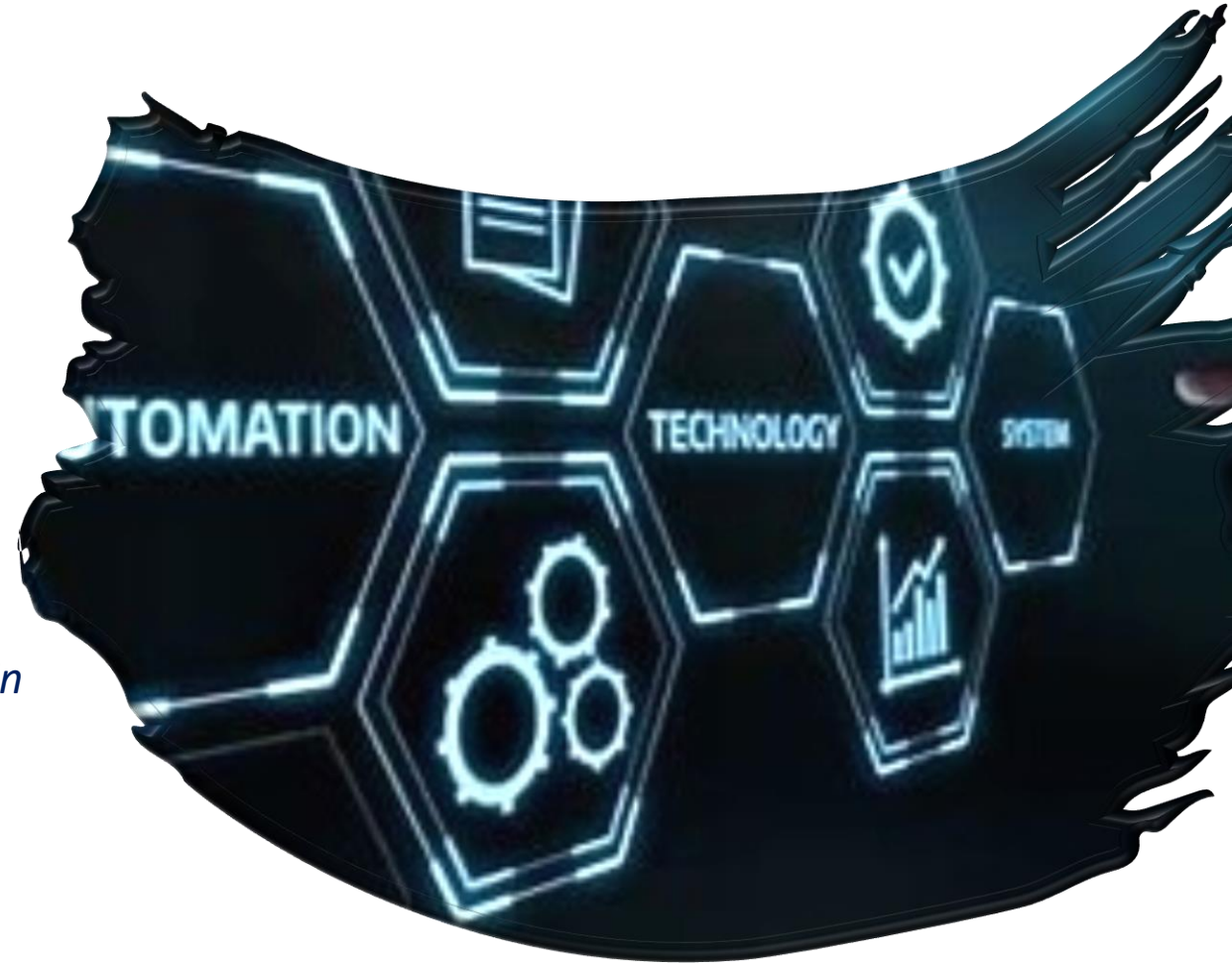
Hand sanitiser and lithium batteries are restricted to ship by air



# Innovation for sustainability

*Smart Port for the future*

- **Paperless**
  - *Electronic Release Order for imports*
  - *Electronic Booking Confirmation Notice for exports*
- **Automation**
  - *Gate Automation – Remote Container Inspection*
  - *Remote Reefer Monitoring*
- **Transparency and Security**
  - *Track & Trace*
  - *Improved compliance and data exchange - API, Blockchain*
- **Faster processing**
  - *5G*



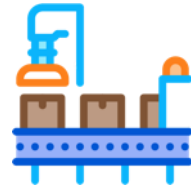
# HKSPA creates sustainable value

*by unlocking business growth and new opportunities*



**DEVELOP AIR-SEA  
CONNECTION**

**Regulated air cargo  
screening facilities**



**On dock  
warehouse**

**Intermodal  
Transshipment  
Facilitation Scheme**



**Collaboration with  
stakeholders**



**CAPTURE E-COMMERCE  
OPPORTUNITIES**





**HKSPA** enhances your resilience, sustainability & productivity

**K**eeps ahead of challenges

**S**ustains the future

**P**artners with you to progress opportunities

**A**chieves business success

*Contact us at [marketing@hkseaportalliance.com](mailto:marketing@hkseaportalliance.com)*





**THANK  
YOU**